

Operating Instruction for Wireless Borescope



Please read this manual before switching the unit on.
Important safety information inside.

www.zicotech.com

2.Symbols

The following signal words and meanings are intended to explain the levels of risk associated with this product.

DANGER: Indicates an imminently hazardous situation, which, if not avoided, will result in death or serious injury.

WARNING: Indicates a potentially hazardous situation, which, if not avoided, could result in death or serious injury.

CAUTION: Indicates a potentially hazardous situation, which, if not avoided, may result in minor or moderate injury.

Notice: (Without Safety Alert Symbol) Indicates important information not related to an injury hazard, such as a situation that may result in property damage.

Some of the following symbols may be used on this product. please study them and learn their meaning. Proper interpretation of these symbols will allow you to operate the product better and safer.

Safety Alert: Indicates a potential personal injury hazard.

Read Operator's Manual: To reduce the risk of injury, user must read and understand operator's manual before using this product.

V Voltage: Voltage

min Minutes: Time

Direct Current: Type or a characteristic of current

3.Features

- Attaches directly to your phone using the clip (included).
- Take pictures of the images captured by the scope.
- File your video and pictures.
- Share saved data.
- View dark areas with the 5-stage LED adjustment.
- Record a voice note in the image or video.
- Send live video to your phone.

1.Safety Instructions

WARNING

READ AND UNDERSTAND ALL INSTRUCTION. Failure to follow all instructions listed below, may result in electric shock, fire or serious personal injury.

- Read operator's manual carefully. Learn the applications and limitations, as well as the specific potential hazards, related to this device. Following this rule will reduce the risk of electric shock, fire, or serious injury.
- Do not operate battery devices in explosive atmospheres, such as in the presence of flammable liquids, gases or dust. Battery devices create sparks which may ignite the dust or fumes.
- Do not disassemble the device. Contact with internal parts may increase the risk of electric shock or cause damage to the device.
- Do not use on a ladder or unstable support. Stable footing on a solid surface enables better control of the device in unexpected situations.
- Do not store the device in an area of high heat or humidity. Do not expose the device to extended high heat from the sun (such as on a vehicle dashboard.) To reduce the risk of serious personal injury, do not store outside or in vehicles. Damage to the device or the battery can result.
- Do not expose device to rain or wet conditions. Water entering a device will increase the risk of electric shock.
- Use the device in accordance with these instructions and in the manner intended for the device, taking into account the environmental conditions and the work to be performed. Use of the device for operations different from those intended could result in a hazardous situation.
- Do not use the inspection scope for diving or any other prolonged underwater use.
- The plastic housing is not waterproof. The camera cable is waterproof to 1.8M.
- Ensure the device is disconnected and turned off before inserting or changing batteries.
- Do not mix old and new batteries or different brands of batteries.
- Remove batteries from the device when not in use for an extended time.
- Always replace the alkaline battery with the same type of alkaline battery. Use of any other battery packs may create a risk of injury and fire.
- This device should not be operated unless the battery compartment is closed.
- Do not place battery devices or their batteries near fire or heat. This will reduce the risk of explosion and possibly injury.
- Do not crush, drop or damage battery. Do not use batteries that have been dropped or received a sharp blow. A damaged battery is subject to explosion. Properly dispose of a dropped or damaged battery immediately.
- Batteries can explode in the presence of a source of ignition, such as a pilot light. To reduce the risk of serious personal injury, never use any battery device in the presence of open flame. An exploded battery can propel debris and chemicals. If exposed, flush with water immediately.
- Under extreme usage or temperature conditions, battery leakage may occur. If liquid comes in contact with your skin, wash immediately with soap and water. If liquid gets into your eyes, flush them with clean water for at least 10 minutes, then seek immediate medical attention. Following this rule will reduce the risk of serious personal injury.
- Save these instructions. Refer to them frequently and use them to instruct others who may use this device. If you loan someone this device, loan them these instructions also.

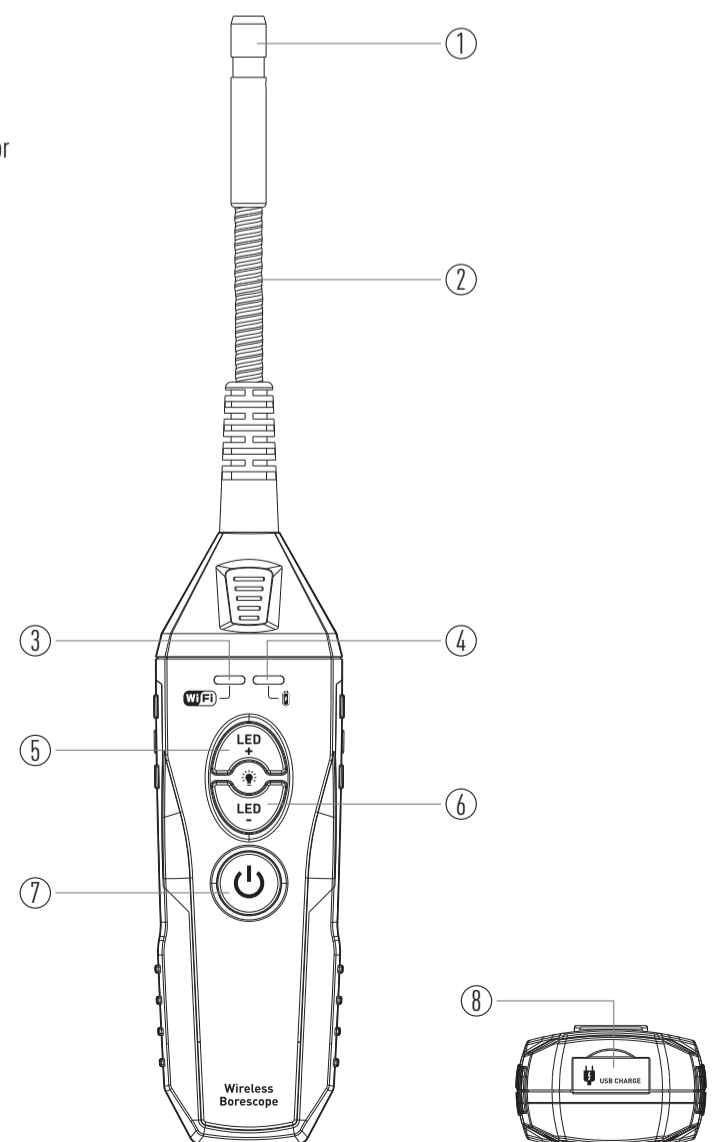
4.Description

WARNING: Do not use this product if it is not completely assembled or if any parts appear to be missing or damaged. Use of a product that is not properly and completely assembled or with damaged or missing parts could result in serious personal injury.

WARNING: Do not attempt to modify this product or create accessories not recommended for use with this product. Any such alteration or modification is misuse and could result in a hazardous condition leading to possible serious personal injury.

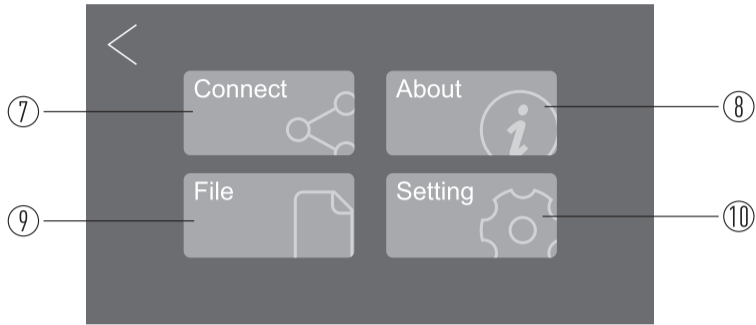
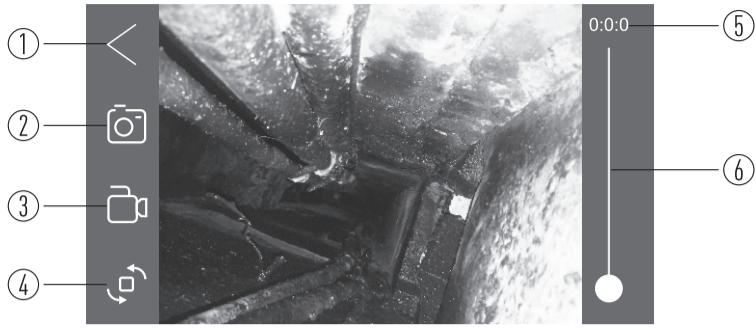
4-1.Meter Description

- Camera
- Gooseneck
- Wi-Fi Status Indicator
- Battery Status Indicator
- Brightness Increase
- Brightness Decrease
- POWER Button
- Mini USB Socket



4-2. Icon Description / Function

- | | |
|----------------------|-----------------------------|
| 1-Back | 6-LED Brightness LED On/Off |
| 2-Take a Picture | 7-Connect Device and View |
| 3-Take a Video | 8-About |
| 4-90 Degree Rotation | 9-File |
| 5-Record Times | 10-Setting |



5. Operation

5-1. Turning the Inspection Scope On/off

5-1-1. Switching the endoscope On and Off

1. To turn the device On, press and hold the **POWER** Button until the button starts to light up green (approximately 0.5 seconds).
2. The button should begin flashing within a few seconds, when it stops flashing and turns solid green, the scope is ready to connect.
3. To turn the device Off, press and hold the **POWER** Button for approximately 0.5 seconds until the button starts a flashing red pattern, it will turn Off in a few seconds.

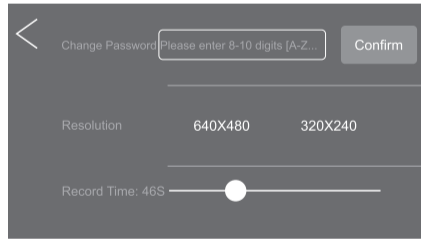
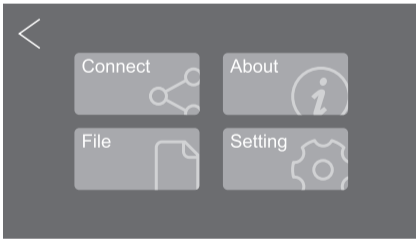
5

5-4. Taking a Video

- Aim the scope at the target area.
- Select the video camera icon.
- Push the green button to start recording the video.
- Push the green button again to stop recording.
- To save, swipe the video to the left toward the file cabinet.
- To delete, swipe the video downward.

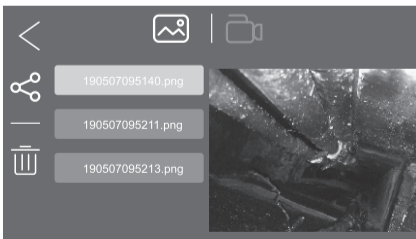
5-5. App Setting

- This app is optimized for: iOS versions 6.0 and higher; Android versions 4.0 and higher.
- At here you can setting Camera Setting, App Language and App Help.
- In camera setting you can set record time, resolution and frames.

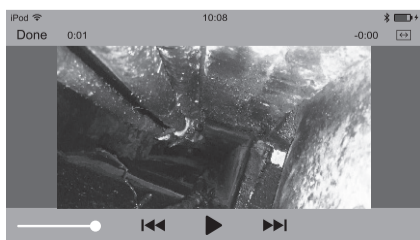


5-6. File Function

- Two buttons at the bottom of this interface can switch between displaying videos and pictures.



- Click on the video preview or click on the image preview to go to the big picture view mode, where you can play the video and delete or share the file.



7

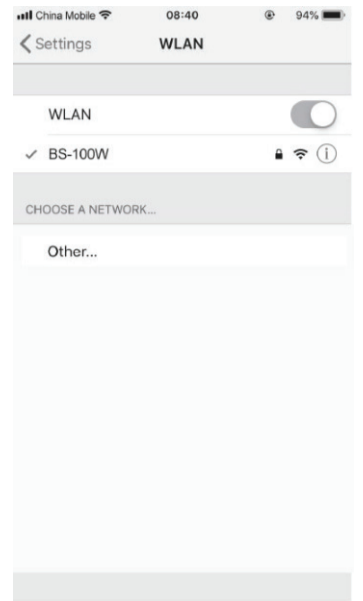
5-1-2. Camera Lighting

- So as to be able to use the endoscope even in absolutely dark areas, continuously dimmable LED lighting is integrated in the camera head.
 - The number on the screen, next to the sun symbol, indicates the brightness level of the LED light.
1. Press the "**LED -**" Button to reduce the brightness.
 2. Press the "**LED +**" Button to increase the brightness.
 3. Set the lighting in such a way that the monitor image displayed is not overexposed or underexposed.

5-2. Connecting The Inspection Scope with Your Smartphone

- Turn the device On.
- On your phone, turn the wireless network On and open to the wireless connection screen.
- Select the network named with some trailing letters and numbers, NO Password.
- Once the phone indicates that it is connected to the new network, go the **Meterbox iScope** App on your phone.
- Select and open the **Meterbox iScope** App.
- Open the inspection scope app segment, the video feed should start within a few seconds.

Note: Your phone may not have internet access while it is connected to the inspection scope.



5-3. Taking a Picture

- Images can be saved and shared via email or social media.
- Aim the scope at the target area.
- Tap the camera On icon and tap the large white button.
- The picture will appear on the screen.
- To save, swipe the picture to the left toward the file cabinet.
- To delete, swipe the picture downward.
- Multiple pictures can be saved into each project.

Note: Pictures will be saved into the current project name, to save into another existing project, see managing your projects.

6

5-7. File Management

Click on the upper right corner of the file interface to batch or manage a single file, including sharing and deleting functions.



6. Charging the Battery

- ⚠ The battery is located inside the handle of the endoscope. You should not replace the battery with any other battery.
- ⚠ The battery should only be removed or replaced by a specialist/specialist workshop.
- ⚠ Remove the battery when the endoscope is not going to be used for a long period of time, observe the correct polarity when replacing the battery.
- The battery status icon shows the remaining battery power in five levels, means the battery is fully charged.
- When using for the first time or if the battery level is lower, appears, meaning the battery has to be charged.
- To do so, proceed as follows:
 1. Connect the USB cable to the power adapter.
 2. Connect the other end of the cable to the "Mini USB" socket.
 3. Connect the power adapter to a mains outlet.
 4. The endoscope is turned on automatically.
 5. Red LED flashes, green when charged.

7. Technical Data

Operating Voltage	3.7V/DC, Lithium Battery
Battery Capacity	2600mAh
Charge	DC 5V/1A
Camera	300 thousand pixels 6 with LEDs
Camera Diameter	9mm
Gooseneck Length	1.5M (1M/2M Optional)
Video Frame Rate	30fps
Field Angle	55°
Optimum Focus	4 to 8cm
Protection Class	IP67 (Goose neck only)
Operating Temperature	0 to 50°C
Storage Temperature	-20 to 60°C



8